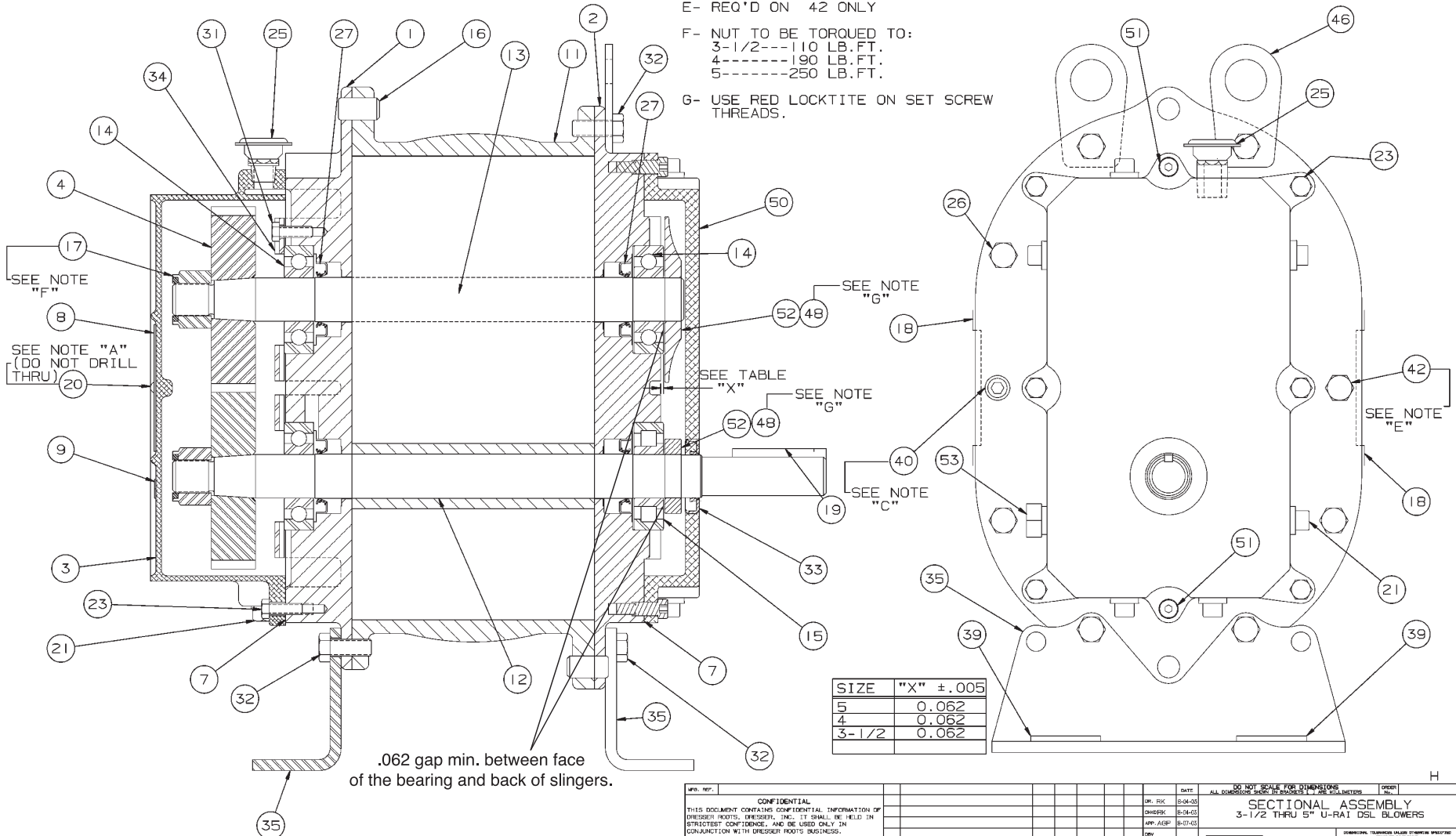


- NOTES:
- A- INSTALL ITEM #20 (SCREW) IN ASSEMBLY
 - C- 3-1/2 REQ'D SOC. HD. ON G.E. AND D.E.
 - E- REQ'D ON 42 ONLY
 - F- NUT TO BE TORQUED TO:
 3-1/2---110 LB.FT.
 4-----190 LB.FT.
 5-----250 LB.FT.
 - G- USE RED LOCKTITE ON SET SCREW THREADS.



WPS. REF.	CONFIDENTIAL	DATE	DO NOT SCALE FOR DIMENSIONS ALL DIMENSIONS SHOW IN INCHES UNLESS OTHERWISE SPECIFIED
THIS DOCUMENT CONTAINS CONFIDENTIAL INFORMATION OF DRESSER ROOTS, DRESSER, INC. IT SHALL BE HELD IN STRICTEST CONFIDENCE AND BE USED ONLY IN CONNECTION WITH DRESSER ROOTS BUSINESS.		DR. P&C	8-24-05
		DRWBY	8-24-05
		APP. (GDP)	8-23-05
		CHK	
		SCALE	FULL
		DRW. FILE / DIRECTORY	
REP. # 810308	CONFIDENTIALITY	DATE	8/23/05
<input type="checkbox"/> FLATNESS	<input type="checkbox"/> PERPENDICULARITY	ENGR	7376V
<input type="checkbox"/> ANGLE	<input type="checkbox"/> PROFILE OF LINE	DRWING	
<input type="checkbox"/> PARALLELISM	<input type="checkbox"/> PROFILE OF SURFACE	REVISE	
<input type="checkbox"/> TRUE POSITION	<input type="checkbox"/> FINISH ON RECORD THICKS	DRG.	
<input type="checkbox"/> STRAIGHTNESS		APP.	

SECTIONAL ASSEMBLY
3-1/2 THRU 5" U-RAI DSL BLOWERS

DRESSER ROOTS, Dresser, Inc.
Houston, TX USA

T30356023

Assembly of UNIVERSAL RAI Series - DSL with Splash Lubricated Drive End 3-5" Gear Diameter

