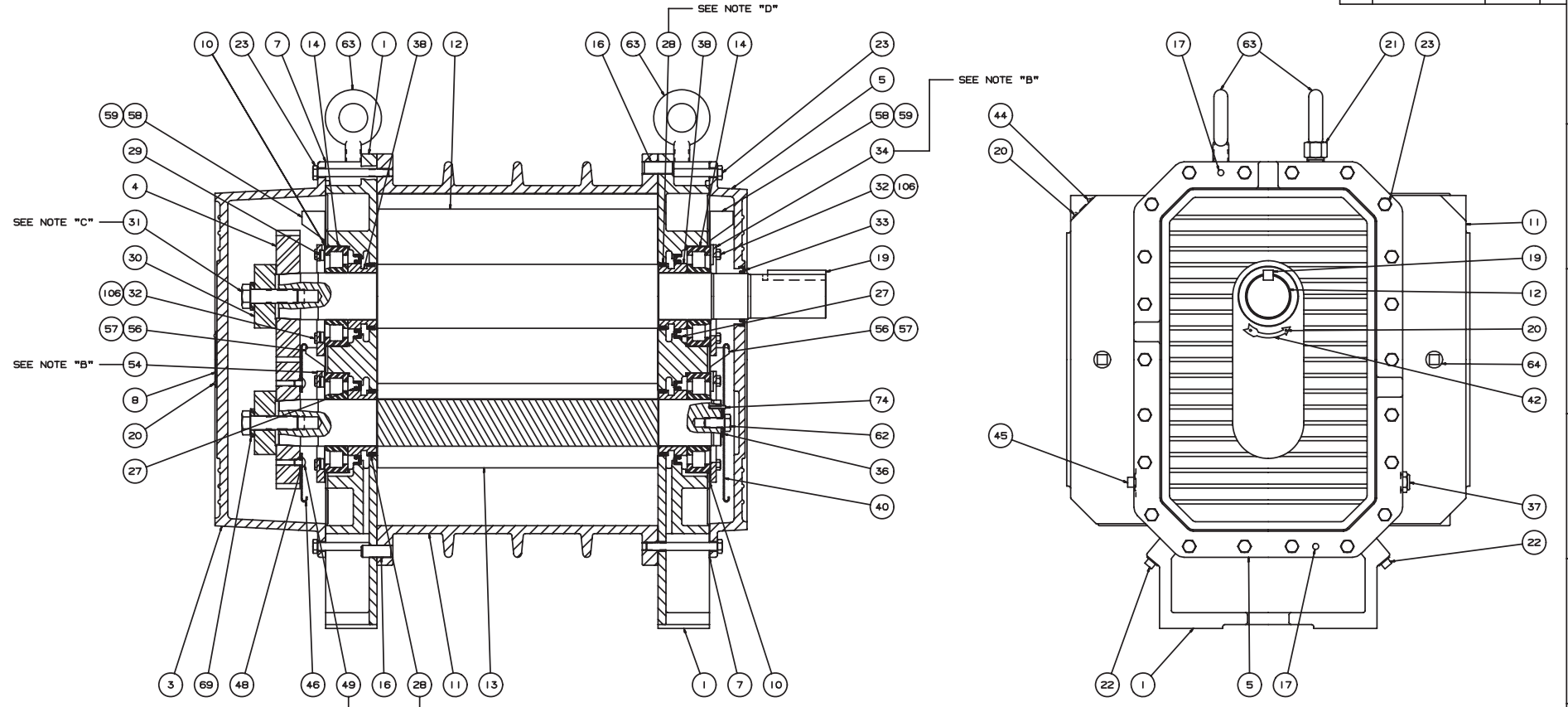


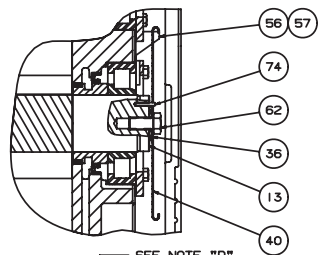
REV.	PART NAME	PART No.	MAT'L.



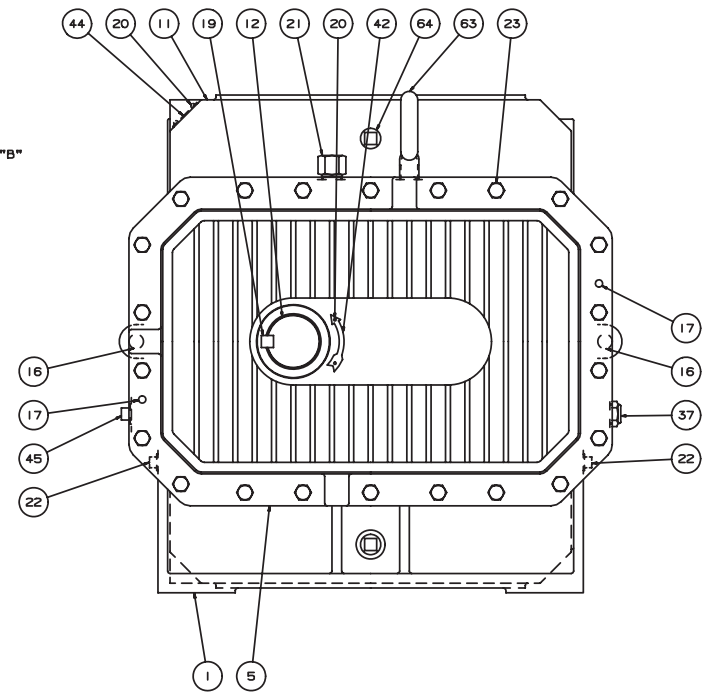
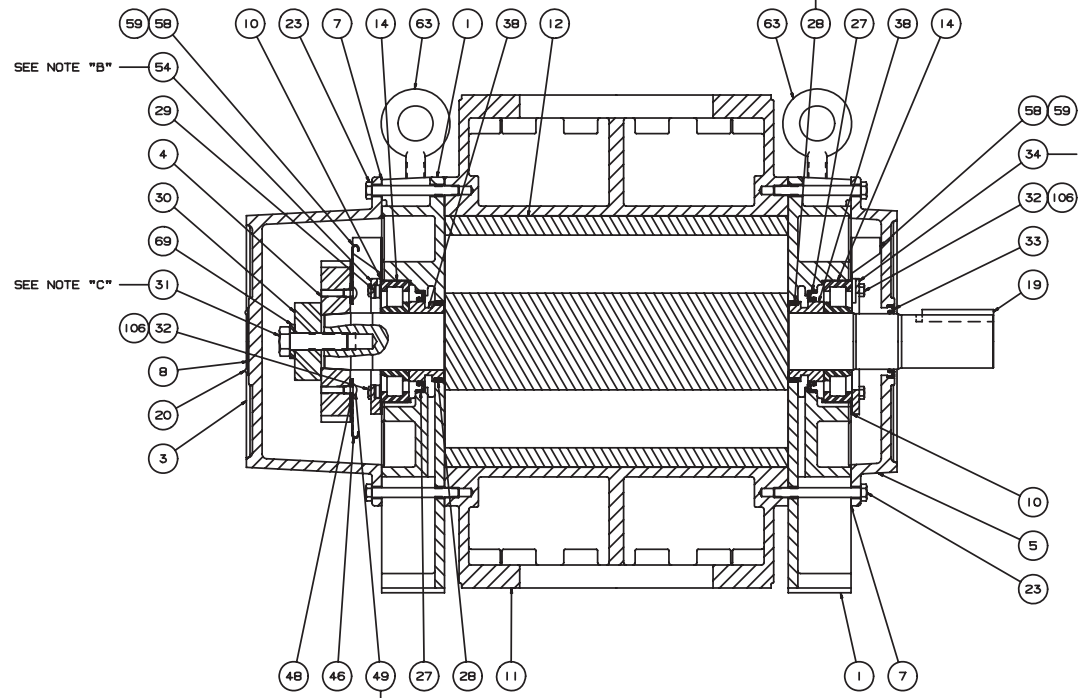
- NOTES:
- A - USE JOHN CRANE PLASTIC LEADS No. 2 ON ALL PIPE THREADS.
  - B - ITEMS 34 & 54 MUST BE INSTALLED WITH OIL GROOVE AT TOP.
  - C - APPLY OIL TO BOLT THREADS & UNDER BOLT HEAD, & TORQUE TO 650 FT. LBS. (IF MOLYKOTE GN PASTE IS USED IN PLACE OF OIL ON THREADS, TORQUE TO 500 FT. LBS.)
  - D - ITEM 28 TO BE INSTALLED WITH GAP TOWARD INLET FOR PRESSURE BLOWER OR TOWARD DISCHARGE FOR VACUUM BLOWER.
  - E - SCREW THREADS TO BE OILED & TORQUED TO 25 FT. LBS.

srs. ref.   658-757-024 & 657-734-013 CONFIDENTIAL THIS DOCUMENT CONTAINS CONFIDENTIAL INFORMATION OF ROOTS DIVISION, DRESSER INDUSTRIES, INC. IT SHALL BE HELD IN STRICTEST CONFIDENCE, AND BE USED ONLY IN CONNECTION WITH ROOTS DIVISION BUSINESS.		DO NOT SCALE FOR DIMENSIONS ALL DIMENSIONS UNLESS OTHERWISE SPECIFIED ARE IN INCHES ( ) AND MILLIMETERS ( ) DATE: 4/2/93 DRW. RE: 4/2/93 APP. REM: [Signature] APP. AGR: [Signature] DES: [Signature]		QTY: 3792-B
REF. 1: SPIN 2: FLATNESS 3: ANGLE 4: PARALLELISM 5: TRUE POSITION 6: STRAIGHTNESS		7: CONCENTRICITY 8: IRREGULARITY 9: PROFILE OF LINE 10: PROFILE OF A SURFACE 11: DIAMETER 12: FINISH OR SECOND DECIMALS		SCALE: 4" = 1'-0" DB FILE / DIRECTORY: 74769A23 REM: 1/8" ± 0.10-V DB RDA DATE: [Blank] TIME: [Blank] DWD: [Blank] APP: XASR
B INCREASED TORQUE FROM 450 TO 500 A ADDED ITEM #106 PER ECN		NEP: 8/2/92 4403V DATE: [Blank] TIME: [Blank] DWD: [Blank] APP: [Blank]		ROOTS DIVISION DRESSER EQUIPMENT GROUP A HALLIBURTON COMPANY CONERSVILLE, IN USA 874-769-023

Figure 6 - Assembly of RCS-J WHISPAIR Vertical Style Blowers



SEE NOTE "D"



- NOTES:
- A - USE JOHN CRANE PLASTIC LEADS No. 2 ON ALL PIPE THREADS.
  - B - ITEMS 34 & 54 MUST BE INSTALLED WITH OIL GROOVE AT TOP.
  - C - APPLY OIL TO BOLT THREADS & UNDER BOLT HEAD, & TORQUE TO 650 FT. LBS. (IF MOLYKOTE GN PASTE IS USED IN PLACE OF OIL ON THREADS, TORQUE TO 500 FT. LBS.)
  - D - ITEM 28 TO BE INSTALLED WITH GAP TOWARD INLET FOR PRESSURE BLOWER OR TOWARD DISCHARGE FOR VACUUM BLOWER.
  - E - SCREW THREADS TO BE OILED & TORQUED TO 25 FT. LBS.

MFG. REF. 874-769-023 & 858-758-024		DATE		3792-B	
CONFIDENTIAL					
THIS DOCUMENT CONTAINS CONFIDENTIAL INFORMATION OF ROOTS DIVISION, Dresser Industries, Inc. IT SHALL BE HELD IN STRICTEST CONFIDENCE, AND BE USED ONLY IN CONJUNCTION WITH ROOTS DIVISION BUSINESS.					
DR.	RE	DATE	APP.	AGR.	SCALE
		4/27/85			4" = 1'-0"
APP.	AGR.				
REV. B INCREASED TORQUE FROM 450 TO 500			NEP	10/28/85	4403V
REV. A ADDED ITEM # 106 PER ECN			REM	12-13	6110-V LB
			DATE	CHANG	RDA
			NOTICE	CHG.	74-770A23
			APP	APP	XASR
SECTIONAL ASSEMBLY					
800 RCS-JH					
			ROOTS DIVISION DRESSER EQUIPMENT GROUP A HALLIBURTON COMPANY CONNEYSVILLE, IN USA		
			874-770A23 874-770A23 874-770A23		
			874-770A23		

Figure 7 - Assembly of RCS-J WHISPAIR Horizontal Style Blowers