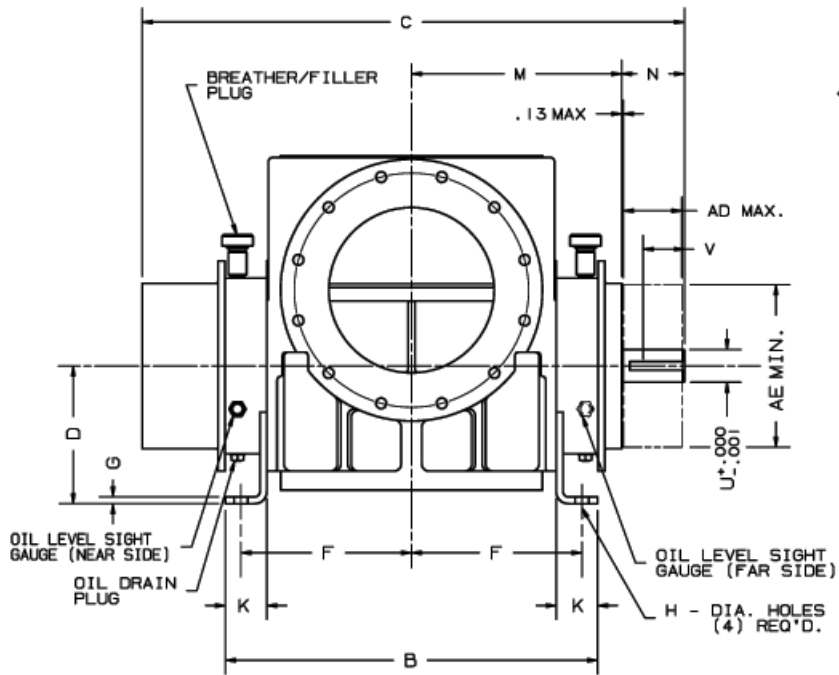


- NOTES:**
1. DRIVE END COVER TO BE PINNED TO HEADPLATE AFTER ALIGNING SEAL BORE TO SHAFT WITHIN $.001''$ ($.025$ mm).
 2. USE JOHN CRANE PLASTIC LEAD No. 2 ON ALL PIPE THREADS.
 3. APPLY OIL TO NUT THREADS & NUT FACE AND TORQUE TO 1200 FT-LBS (1694 N-m) (IF MOLYKOTE GN PASTE IS USED, TORQUE TO 1000 FT-LBS (1365 N-m)).
 4. APPLY LOCKTITE TO SCREW THREADS & TORQUE TO 128 FT-LBS (174 N-m).
 5. APPLY LOCKTITE TO SCREW THREADS & TORQUE TO 25 FT-LBS (34 N-m).
 6. APPLY OIL TO SCREW THREADS & TORQUE TO 75 FT-LBS (101 N-m).
 7. ITEMS 34 & 54 MUST BE INSTALLED WITH OIL GROOVE AT TOP.

OPTIONAL BOTTOM DRIVE

1072-018-023 CONFIDENTIAL THIS DOCUMENT CONTAINS CONFIDENTIAL INFORMATION OF ROBERTSON ENGINEERING, INC. IT SHALL BE HELD IN STRICTEST CONFIDENCE, AND BE LOANED ONLY IN CONNECTION WITH ROBERTSON BUSINESS.		DATE: 01/16/93 DESIGNED BY: JWB DRAWN BY: JWB CHECKED BY: JWB APPROVED BY: JWB PART NO.: 74734023 REV. 1
E. OIL EYE BOLT, ADD LIFTING LHM FN 8-316 1/163 FN ADP D. OIL LIFTING LUGS HSP 8/32 1/4-20 C. REVISED FOR SOY ENG 8/18/92 JWB B. CLASSIFIED LIFTING LHM 2/8/92 JWB A. ADD METRIC UNITS TO NOTES RE 5/2/92 DE RDA 74734A23	ALL DIMENSIONS GIVEN IN PARENTHESES () ARE ACCEPTABLE METRIC H SECTIONAL ASSEMBLY 700 DVJ 	
REV. 1 DATE: 01/16/93 DESIGNED BY: JWB DRAWN BY: JWB CHECKED BY: JWB APPROVED BY: JWB	PART NO.: 74734023 REV. 1	



* TO FACE OF JET INLET FLANGE
JET INLET OPENING LOCATED ON
BOTH SIDES OF BLOWER. ONLY
ONE SIDE TO BE USED AS JET
INLET. OTHER OPENING TO BE
CLOSED WITH STEEL COVER PLATE,
SUPPLIED BY ROOTS.

INLET AND DISCHARGE FLANGES TO MATE
FLUSH AND SQUARE WITH FLAT FACE
FLANGES ONLY. USE FULL FACE GASKETS

FOR V-BELT DRIVEN UNITS
MOTOR TO BE LOCATED ON
DRIVE SHAFT SIDE OF BLOWER

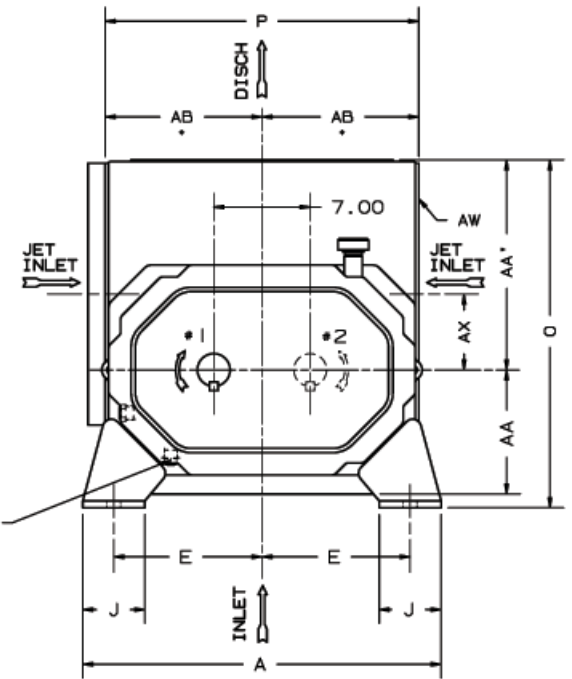
700 DVJ-H DRY VACUUM WHISPAIR BLOWER

	12"FLG
OPENING	12.00
BOLT CIRCLE	17.00
FLANGE O. D.	19.00
NO TAPPED HOLES	12
SIZE HOLES	7/8-9
TAP DEPTH	1.31

W - INLET & DISCHARGE
AD - SHEAVE WIDTH
AE - SHEAVE DIAMETER
AW - JET INLET

ALL DIMENSIONS IN INCHES

FRAME SIZE	A	B	C	D	E	F	G	H	J	K	M	N	O	P	U	V	KEYWAY	W	AA	AA'	AB	AD	AE	AW	AX	APPROX. WEIGHT
721	26.00	27.00	39.38	10.00	10.75	12.38	.50	1.00	4.50	3.00	15.25	4.56	25.25	22.75	2.375	3.00	.625 x .313	12"FLG	9.00	15.25	11.38	4.43	11.80	12"FLG	5.50	1750



POSITION #1 FURNISHED
UNLESS SPECIFIED OTHERWISE
ALTERNATE POSITION #2
ALSO AVAILABLE

A-REVISED APPROX. WEIGHT JHB 11-9-93

RE
2/10/93

DB

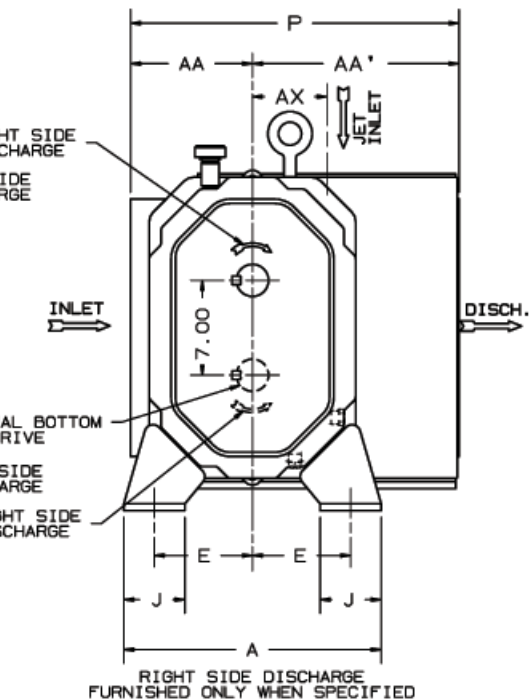
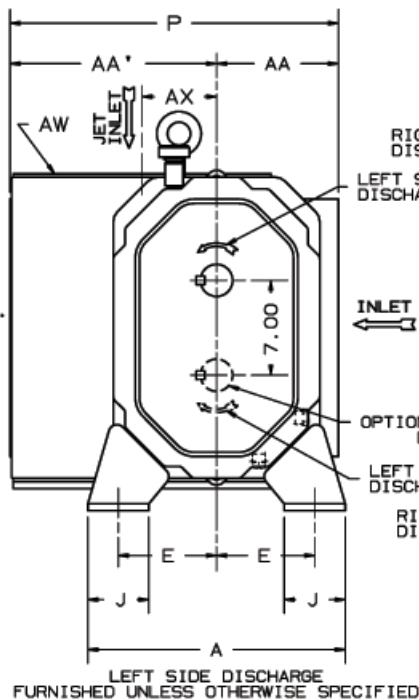
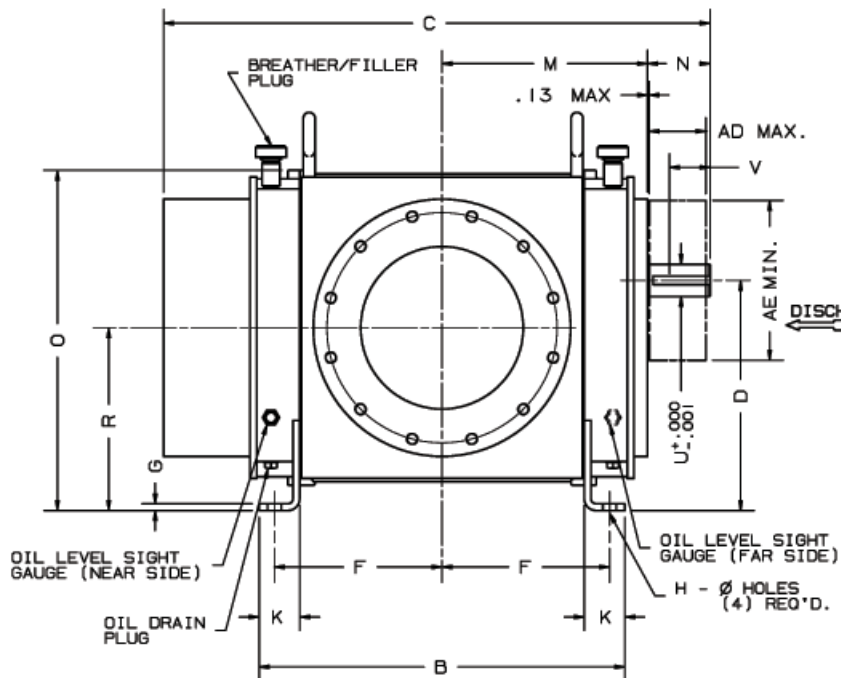
RDA

73983021

73983e21

/PARTS1/XXAD

700 DVJ-H Blower



INLET AND DISCHARGE FLANGES TO MATE FLUSH AND SQUARE WITH FLAT FACE FLANGES ONLY. USE FULL FACE GASKETS

FOR V-BELT DRIVEN UNITS MOTOR TO BE LOCATED ON INLET SIDE OF BLOWER

	12"FLG
OPENING	12.00
BOLT CIRCLE	17.00
FLANGE O.D.	19.00
No TAPPED HOLES	12
SIZE HOLES	7/8-9
TAP DEPTH	1.31

W - INLET & DISCHARGE
 AD - SHEAVE WIDTH
 AE - SHEAVE DIAMETER
 AW - JET INLET

700 DVJ DRY VACUUM WHISPAIR BLOWER

FRAME SIZE	A	B	C	D	E	F	G	H	J	K	M	N	O	P	R	U	V	KEYWAY	W	AA	AA'	AD	AE	AW	AX	APPROX. WEIGHT
721	19.00	27.00	39.38	17.00	7.25	12.38	.50	1.00	4.50	3.00	15.25	4.56	24.88	24.25	13.50	2.375	3.00	.625 x .313	12"FLG	9.00	15.25	4.43	11.80	12"FLG	5.50	1750

C-CHGD LIFTING LUGS NEP 10/19/95 4399V
 B-REVISED APPROX. WEIGHT JHB 10-21-93
 A-CORRECTED BREATHER RVE 2/24/93

JHB
10-21-92

DB

DLB
1/9/93

873-962-021

XXAD 73962A21

/PARTS/XXAD