

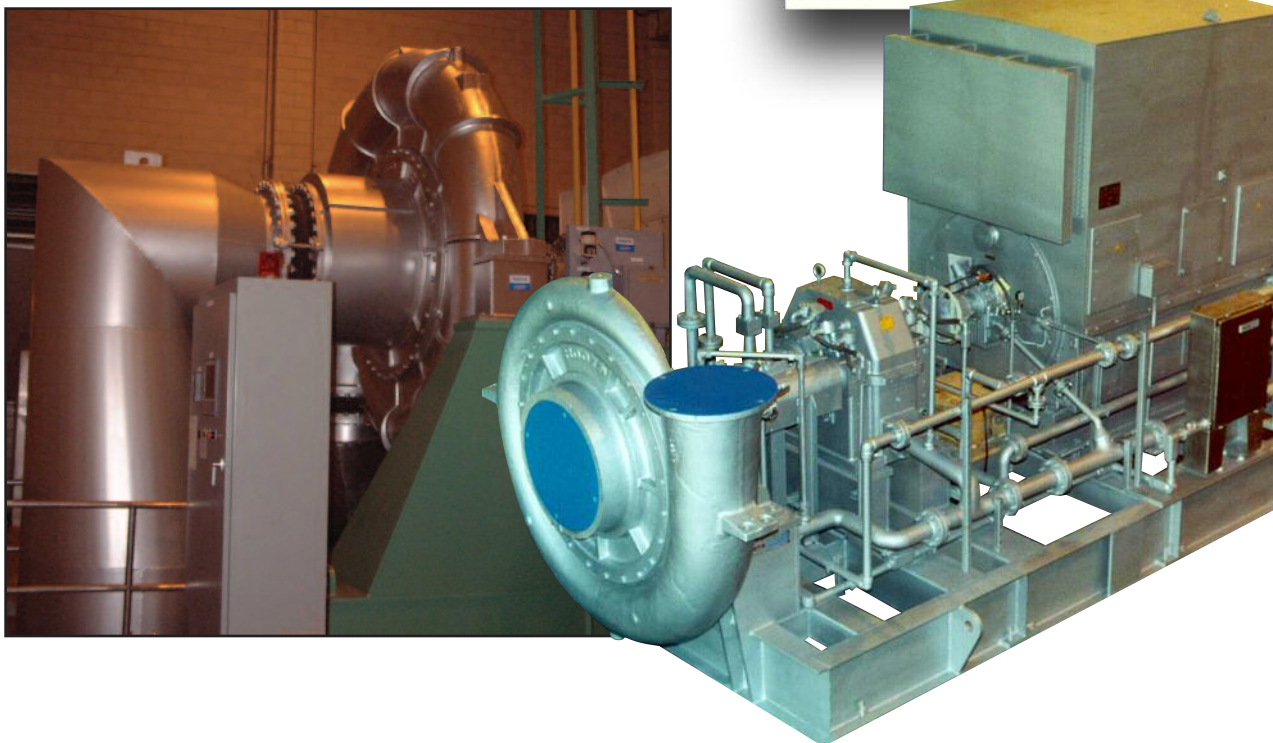
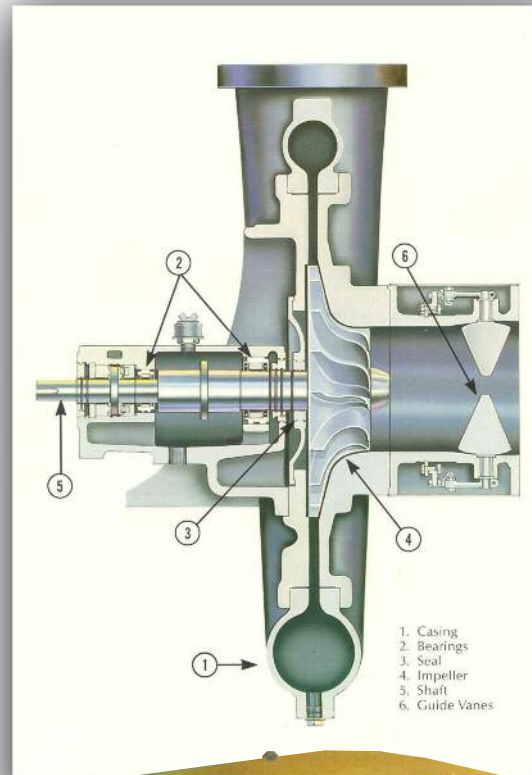
SPECIFICATIONS

ROOTS® OIB - Overhung Impeller with Bearing Housing - Compressor

ROOTS® OIB single-stage centrifugal compressors feature an overhung impeller arrangement with its own bearing housing to provide maximum design flexibility. This compressor is suitable for a variety of constant speed or variable speed drivers.

Adjustable inlet guide vanes are generally used to control the capacity on a constant speed driver arrangement. Choices in materials of construction and impeller configurations are available to fit your specific application needs.

- Choice of impeller and casing materials of construction
- Polytropic heads to 42,000 ft.
- Flows from 5000 to 250000 cfm (8495 to 424753 m³/hr)
- API capability
- ROOTS Control packages



Dresser Roots

Houston, Texas Headquarters • U.S. Toll Free Phone: 1-877-363-ROOT(S) (7668) • Direct Phone: +1 832-590-2600

Connersville, Indiana Operations • U.S. Toll Free Phone: 1-877-442-7910 • Direct Phone: +1 765-827-9285

United Kingdom Operations • Phone: +44 (0) 1695 52600

USA/Canada Sales • Phone: +1 773-444-3360

Houston, Texas Factory Service • Phone: +1 713-896-4810

Mexico City Sales and Factory Service • Phone: +52 55 5889 5811

Dubai Sales and Factory Service • Phone: +971 4-8830831

Malaysia Sales • Phone: +60 3 2267 2600

China Sales • Phone: +86 10 8486 2440

Shanghai Factory Service • Phone: +86 21 5858 7638



©2007 Dresser, Inc. all rights reserved. • Printed in the U.S.A. • All information subject to change without notice. • Universal RAI and EasyAir are registered trademarks of Dresser, Inc. • ROOTS, RAM X, and WHISPAIR, are trademarks of Dresser, Inc.

www.dresser.com/rootsblowers